



**2021**

---

**EVOX**

---

**EVOPS**



## ***ABOUT US***

In the early 90's, an electrical engineering student named Juliano Anflor decided to develop a car audio amplifier for a college project. What started as a hobby, turned into a passion, and some years later into the business of his life.

Always innovating and searching for new technologies, SounDigital, has earned its place in the hearts of car audio, motorcycle and powersports dealers across the globe.

SounDigital products are sold in over 50 countries worldwide.

# SUMMARY

---

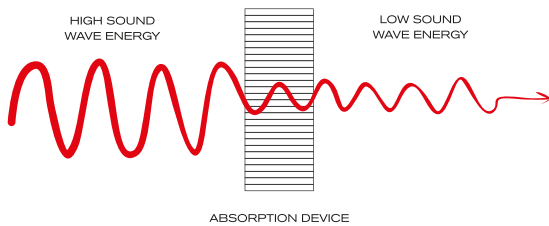
<b>EVOX</b>	<b>04</b>
TECHNOLOGY	05
400.2 EVOX	07
400.4 EVOX	09
800.1 EVOX	11
800.4 EVOX	13
1200.2 EVOX	15
1200.4 EVOX	17
1600.1 EVOX	19
2400.4 EVOX	21
3000.1 EVOX	23
5000.1 EVOX	25
8000.1 EVOX	27
12000.1 EVOX	29
20000.1 EVOX	31
35000.1 EVOX	33
<b>EVOPS</b>	<b>36</b>
BUILT TO LAST	38
TECHNOLOGY	39
800.1 EVOPS	41
800.4 EVOPS	43
1200.4 EVOPS	45
2000.4 EVOPS	47

**EVOX**

## TECHNOLOGY

### DYNAMIC THERMAL MANAGEMENT - DTM®

OUR PATENTED DTM® TECHNOLOGY PROVIDES A FASTER HEAT EXCHANGE BETWEEN THE ELECTRONIC COMPONENTS AND THE HEATSINK, INCREASING THE EFFICIENCY OF OUR AMPLIFIERS AND RESULTING IN LOWER DISTORTION LEVELS DURING LONG PLAYING TIME.



### VIBRATION ABSORPTION DEVICE - VAD®

OUR VAD® TECHNOLOGY REDUCES ALL IMPACT CAUSED BY VIBRATION ON THE ELECTRONIC CIRCUIT BOARD. THIS CAN INCLUDE ROAD VIBRATION AND EVEN VIBRATION CAUSED BY SOUND WAVES, INCREASING THE RELIABILITY OF OUR AMPLIFIERS.

### REDUCED SIZE

THE TECHNOLOGY USED IN OUR AMPLIFIERS BRING BOTH HIGH PERFORMANCE AND POWER IN A COMPACT CHASSIS, PROVIDING FLEXIBLE INSTALLATION SOLUTIONS FOR VEHICLES WITH LIMITED SPACE.



400.2



EVOX

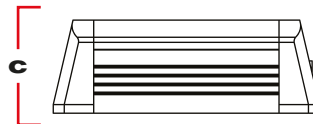
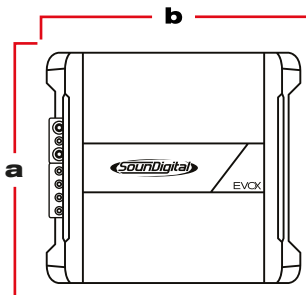
# SPECIFICATIONS



INPUT



OUTPUT



- A:** 4.4 IN / 11.3 CM
- B:** 4.8 IN / 12.3 CM
- C:** 2.0 IN / 5.1 CM

## 4Ω

POWER @ 4Ω: 2 X 132 WRMS  
 POWER @ 2Ω: 2 X 200 WRMS  
 POWER @ 1Ω: N/A  
 BRIDGE POWER @ 4Ω: 1 X 400 WRMS  
 BRIDGE POWER @ 2Ω: N/A  
 OPERATING VOLTAGE: 8V – 16V  
 CURRENT DRAW (MUSIC): 18A  
 CURRENT DRAW (MAX): 36A  
 RECOMMENDED FUSE (MUSIC): 20A

TOTAL EFFICIENCY: 88%  
 DAMPING FACTOR: 200  
 FREQUENCY RESPONSE (-3dB): 5Hz – 22 kHz  
 SNR: 88dB  
 CROSSOVER HPF: 45Hz – 850Hz  
 CROSSOVER LPF: 45Hz – 850Hz  
 THD + N (10% RATED POWER): 0.1%



# 400.4



## EVOX



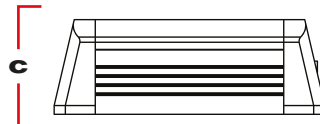
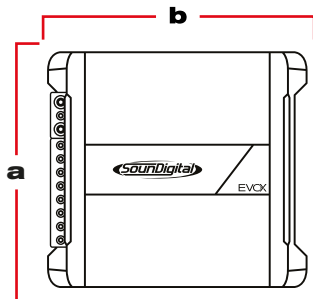
# SPECIFICATIONS



INPUT



OUTPUT



- A:** 4.4 IN / 11.3 CM
- B:** 4.8 IN / 12.3 CM
- C:** 2.0 IN / 5.1 CM

## 4Ω

POWER @ 4Ω: 4 X 66 WRMS  
 POWER @ 2Ω: 4 X 100 WRMS  
 POWER @ 1Ω: N/ A  
 BRIDGE POWER @ 4Ω: 2 X 200 WRMS  
 BRIDGE POWER @ 2Ω: N/A  
 OPERATING VOLTAGE: 8V – 16V  
 CURRENT DRAW (MUSIC): 19A  
 CURRENT DRAW (MAX): 39A  
 RECOMMENDED FUSE (MUSIC): 20A

TOTAL EFFICIENCY: 82%  
 DAMPING FACTOR: 200  
 FREQUENCY RESPONSE (-3dB): 5Hz – 22 kHz  
 SNR: 88dB  
 CROSSOVER HPF: 45Hz – 850Hz  
 CROSSOVER LPF: 45Hz – 850Hz  
 THD + N (10% RATED POWER): 0.1%



# 800.1



# EVOX

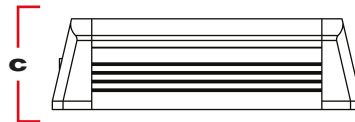
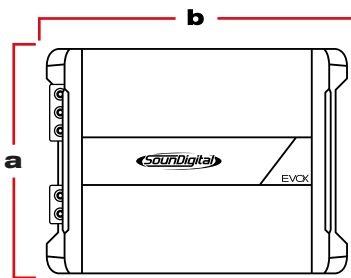
# SPECIFICATIONS



**INPUT**



**OUTPUT**



- A:** 4.4 IN / 11.3 CM
- B:** 5.8 IN / 14.8 CM
- C:** 2.0 IN / 5.1 CM

## 2Ω

POWER @ 4Ω: 1 X 528 WRMS  
 POWER @ 2Ω: 1 X 800 WRMS  
 POWER @ 1Ω: N/A  
 OPERATING VOLTAGE : 8V – 16V  
 CURRENT DRAW (MUSIC): 38A  
 CURRENT DRAW (MAX): 74A  
 RECOMMENDED FUSE (MUSIC): 40A  
 TOTAL EFFICIENCY: 85%  
 DAMPING FACTOR: 200  
 FREQUENCY RESPONSE (-3dB): 5Hz – 500Hz  
 SNR: 90dB  
 SUBSONIC FILTER: 5Hz – 30Hz  
 CROSSOVER LPF: 50Hz – 500Hz  
 THD + N (10% RATED POWER): 0.1%

## 4Ω

POWER @ 4Ω: 1 X 800 WRMS  
 POWER @ 2Ω: N/A  
 POWER @ 1Ω: N/A  
 OPERATING VOLTAGE : 8V – 16V  
 CURRENT DRAW (MUSIC): 38A  
 CURRENT DRAW (MAX): 74A  
 RECOMMENDED FUSE (MUSIC): 40A  
 TOTAL EFFICIENCY: 85%  
 DAMPING FACTOR: 200  
 FREQUENCY RESPONSE (-3dB): 5Hz – 500Hz  
 SNR: 90dB  
 SUBSONIC FILTER: 5Hz – 30Hz  
 CROSSOVER LPF: 50Hz – 500Hz  
 THD + N (10% RATED POWER): 0.1%



# 800.4



# EVOX

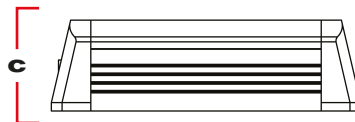
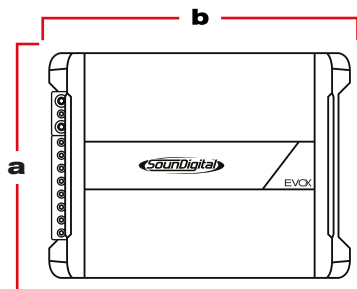
# SPECIFICATIONS



INPUT



OUTPUT



- A:** 4.4 IN / 11.3 CM
- B:** 5.8 IN / 14.8 CM
- C:** 2.0 IN / 5.1 CM

**4Ω**

POWER @ 4Ω: 4 X 132 WRMS  
 POWER @ 2Ω: 4 X 200 WRMS  
 POWER @ 1Ω: N/A  
 BRIDGE POWER @ 4Ω: 2 X 400 WRMS  
 BRIDGE POWER @ 2Ω: N/A  
 OPERATING VOLTAGE: 8V – 16V  
 CURRENT DRAW (MUSIC): 40A  
 CURRENT DRAW (MAX): 80A  
 RECOMMENDED FUSE (MUSIC): 40A

TOTAL EFFICIENCY: 79%  
 DAMPING FACTOR: 200  
 FREQUENCY RESPONSE (-3dB): 5Hz – 22kHz  
 SNR: 91dB  
 CROSSOVER HPF: 45Hz – 850Hz  
 CROSSOVER LPF: 45Hz – 850Hz  
 THD + N (10% RATED POWER): 0.1%



1200.2



EVOX

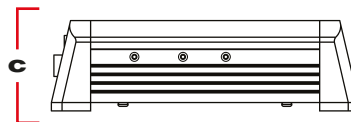
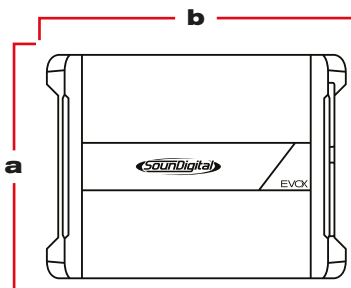
# SPECIFICATIONS



**INPUT**



**OUTPUT**



- A:** 5.4 IN / 13.6 CM
- B:** 7.1 IN / 18.1 CM
- C:** 2.2 IN / 5.5 CM

## 2Ω

POWER @ 4Ω: 2 X 262 WRMS  
 POWER @ 2Ω: 2 X 396 WRMS  
 POWER @ 1Ω: 2 X 600 W RMS  
 BRIDGE POWER @ 4Ω: 1 X 792 WRMS  
 BRIDGE POWER @ 2Ω: 1 X 1200 WRMS  
 OPERATING VOLTAGE: 8V – 16V  
 CURRENT DRAW (MUSIC): 57A  
 CURRENT DRAW (MAX): 115A  
 RECOMMENDED FUSE (MUSIC): 60A  
 TOTAL EFFICIENCY: 83%  
 DAMPING FACTOR: 200  
 FREQUENCY RESPONSE (-3dB): 5Hz – 22kHz  
 SNR: 91dB  
 CROSSOVER HPF: 45Hz – 850Hz  
 CROSSOVER LPF: 45Hz – 850Hz  
 THD + N (10% RATED POWER): 0.1%

## 4Ω

POWER @ 4Ω: 2 X 396 WRMS  
 POWER @ 2Ω: 2 X 600 WRMS  
 POWER @ 1Ω: N/A  
 BRIDGE POWER @ 4Ω: 1 X 1200 WRMS  
 BRIDGE POWER @ 2Ω: N/A  
 OPERATING VOLTAGE: 8V – 16V  
 CURRENT DRAW (MUSIC): 58A  
 CURRENT DRAW (MAX): 116A  
 RECOMMENDED FUSE (MUSIC): 60A  
 TOTAL EFFICIENCY: 82%  
 DAMPING FACTOR: 200  
 FREQUENCY RESPONSE (-3dB): 5Hz – 22kHz  
 SNR: 91dB  
 CROSSOVER HPF: 45Hz – 850Hz  
 CROSSOVER LPF: 45Hz – 850Hz  
 THD + N (10% RATED POWER): 0.1%



# 1200.4



**EVOX**



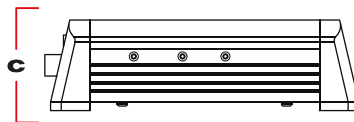
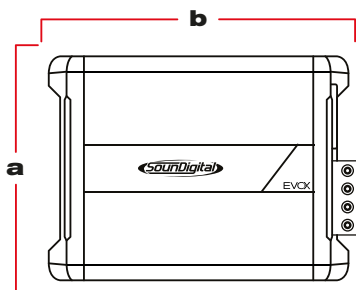
# SPECIFICATIONS



**INPUT**



**OUTPUT**



- A:** 5.4 IN / 13.6 CM
- B:** 7.1 IN / 18.1 CM
- C:** 2.2 IN / 5.5 CM

## 2Ω

POWER @ 4Ω: 4 X 131 WRMS  
 POWER @ 2Ω: 4 X 198 WRMS  
 POWER @ 1Ω: 4 X 300 WRMS  
 BRIDGE POWER @ 4Ω: 2 X 396 WRMS  
 BRIDGE POWER @ 2Ω: 2 X 600 WRMS  
 OPERATING VOLTAGE: 8V – 16V  
 CURRENT DRAW (MUSIC): 57A  
 CURRENT DRAW (MAX): 113A  
 RECOMMENDED FUSE (MUSIC): 60A  
 TOTAL EFFICIENCY: 84%  
 DAMPING FACTOR: 200  
 FREQUENCY RESPONSE (-3dB): 5Hz – 22kHz  
 SNR: 88dB  
 CROSSOVER HPF: 45Hz – 850Hz  
 CROSSOVER LPF: 45Hz – 850Hz  
 THD + N (10% RATED POWER): 0.1%

## 4Ω

POWER @ 4Ω: 4 X 198 WRMS  
 POWER @ 2Ω: 4 X 300 WRMS  
 POWER @ 1Ω: N/A  
 BRIDGE POWER @ 4Ω: 2 X 600 WRMS  
 BRIDGE POWER @ 2Ω: N/A  
 OPERATING VOLTAGE: 8V – 16V  
 CURRENT DRAW (MUSIC): 58A  
 CURRENT DRAW (MAX): 116A  
 RECOMMENDED FUSE (MUSIC): 60A  
 TOTAL EFFICIENCY: 82%  
 DAMPING FACTOR: 200  
 FREQUENCY RESPONSE (-3dB): 5Hz – 22kHz  
 SNR: 91dB  
 CROSSOVER HPF: 45Hz – 850Hz  
 CROSSOVER LPF: 45Hz – 850Hz  
 THD + N (10% RATED POWER): 0.1%



1600.1



EVOX

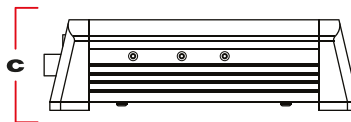
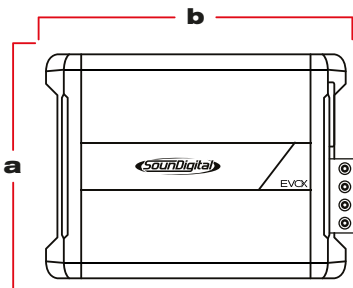
# SPECIFICATIONS



**INPUT**



**OUTPUT**



- A:** 5.3 IN / 13.6 CM
- B:** 7.1 IN / 18 CM
- C:** 2.1 IN / 5.5 CM



SD REMOTE  
LEVEL CONTROL  
**OPTIONAL**

## 1Ω

POWER @ 4Ω: 1 X 1600 WRMS  
 POWER @ 2Ω: 1 X 1056 WRMS  
 POWER @ 1Ω: 1 X 697 WRMS  
 OPERATING VOLTAGE: 8V – 16V  
 CURRENT DRAW (MUSIC): 62A  
 CURRENT DRAW (MAX): 125A  
 RECOMMENDED FUSE (MUSIC): 70A  
 TOTAL EFFICIENCY: 89%  
 DAMPING FACTOR: >2000  
 FREQUENCY RESPONSE (-3dB): 5Hz – 25kHz  
 SNR: 94dB  
 CROSSOVER LPF: 50Hz - 500Hz  
 SUBSONIC: 5Hz - 30Hz  
 THD + N (10% RATED POWER): 0.1%

## 2Ω

POWER @ 4Ω: 1 X 1600 WRMS  
 POWER @ 2Ω: 1 X 1056 WRMS  
 POWER @ 1Ω: 1 X N/A  
 OPERATING VOLTAGE: 8V – 16V  
 CURRENT DRAW (MUSIC): 62A  
 CURRENT DRAW (MAX): 125A  
 RECOMMENDED FUSE (MUSIC): 70A  
 TOTAL EFFICIENCY: 89%  
 DAMPING FACTOR: >2000  
 FREQUENCY RESPONSE (-3dB): 5Hz – 25kHz  
 SNR: 94dB  
 CROSSOVER LPF: 50Hz - 500Hz  
 SUBSONIC: 5Hz - 30Hz  
 THD + N (10% RATED POWER): 0.1%



2400.4



EVOX

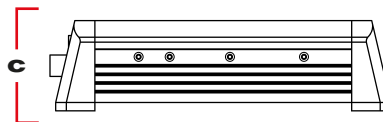
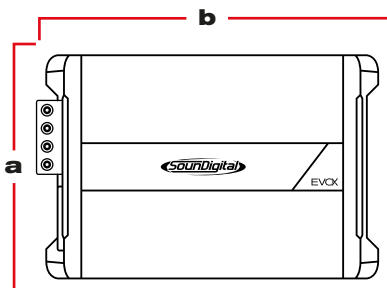
# SPECIFICATIONS



**INPUT**



**OUTPUT**



- A:** 5.4 IN / 13.6 CM
- B:** 8.9 IN / 22.7 CM
- C:** 2.2 IN / 5.5 CM

## 2Ω

POWER @ 4Ω: 4 X 262 WRMS  
 POWER @ 2Ω: 4 X 396 WRMS  
 POWER @ 1Ω: 4 X 600 WRMS  
 BRIDGE POWER @ 4Ω: 2 X 792 WRMS  
 BRIDGE POWER @ 2Ω: 2 X 1200 WRMS  
 OPERATING VOLTAGE: 8V – 16V  
 CURRENT DRAW (MUSIC): 121A  
 CURRENT DRAW (MAX): 241A  
 RECOMMENDED FUSE (MUSIC): 140A  
 TOTAL EFFICIENCY: 79%  
 DAMPING FACTOR: 200  
 FREQUENCY RESPONSE (-3dB): 5Hz – 22kHz  
 SNR: 90dB  
 CROSSOVER HPF: 45Hz – 850Hz  
 CROSSOVER LPF: 45Hz – 850Hz  
 THD + N (10% RATED POWER): 0.1%

## 4Ω

POWER @ 4Ω: 4 X 396 WRMS  
 POWER @ 2Ω: 4 X 600 WRMS  
 POWER @ 1Ω: N/A  
 BRIDGE POWER @ 4Ω: 2 X 1200 WRMS  
 BRIDGE POWER @ 2Ω: N/A  
 OPERATING VOLTAGE: 8V – 16V  
 CURRENT DRAW (MUSIC): 121A  
 CURRENT DRAW (MAX): 241A  
 RECOMMENDED FUSE (MUSIC): 140A  
 TOTAL EFFICIENCY: 79%  
 DAMPING FACTOR: 200  
 FREQUENCY RESPONSE (-3dB): 5Hz – 22kHz  
 SNR: 90dB  
 CROSSOVER HPF: 45Hz – 850Hz  
 CROSSOVER LPF: 45Hz – 850Hz  
 THD + N (10% RATED POWER): 0.1%



# 3000.1



# EVOX

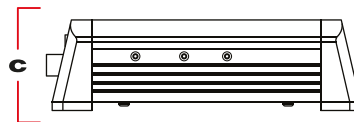
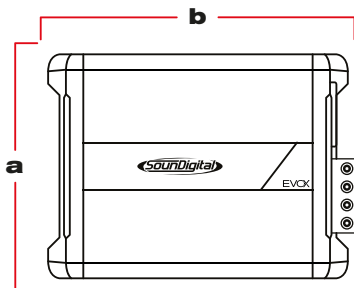
# SPECIFICATIONS



**INPUT**



**OUTPUT**



- A:** 5.3 IN / 13.6 CM
- B:** 9 IN / 22.8 CM
- C:** 2.1 IN / 5.5 CM



SD REMOTE  
LEVEL CONTROL  
**OPTIONAL**

## 1Ω

POWER @ 4Ω: 1 X 1307 WRMS  
 POWER @ 2Ω: 1 X 1980 WRMS  
 POWER @ 1Ω: 1 X 3000 WRMS  
 OPERATING VOLTAGE: 8V – 16V  
 CURRENT DRAW (MUSIC): 121A  
 CURRENT DRAW (MAX): 242A  
 RECOMMENDED FUSE (MUSIC): 140A  
 TOTAL EFFICIENCY: 86%  
 DAMPING FACTOR: >2000  
 FREQUENCY RESPONSE (-3dB): 5Hz – 25kHz  
 SNR: 90dB  
 CROSSOVER LPF: 50Hz - 500Hz  
 SUBSONIC: 5Hz - 30Hz  
 THD + N (10% RATED POWER): 0.1%

## 2Ω

POWER @ 4Ω: 1 X 1980 WRMS  
 POWER @ 2Ω: 1 X 3000 WRMS  
 POWER @ 1Ω: 1 X N/A  
 OPERATING VOLTAGE: 8V – 16V  
 CURRENT DRAW (MUSIC): 121A  
 CURRENT DRAW (MAX): 242A  
 RECOMMENDED FUSE (MUSIC): 140A  
 TOTAL EFFICIENCY: 86%  
 DAMPING FACTOR: >2000  
 FREQUENCY RESPONSE (-3dB): 5Hz – 25kHz  
 SNR: 90dB  
 CROSSOVER LPF: 50Hz - 500Hz  
 SUBSONIC: 5Hz - 30Hz  
 THD + N (10% RATED POWER): 0.1%



5000.1



EVOX



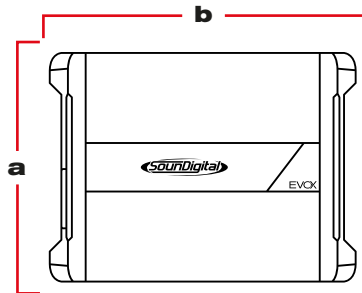
# SPECIFICATIONS



**INPUT**



**OUTPUT**



**A:** 8.8 IN / 22.5 CM  
**B:** 11.8 IN / 29.9 CM  
**C:** 2.8 IN / 7.1 CM



SD REMOTE  
 LEVEL CONTROL  
**OPTIONAL**

## 1Ω

POWER @ 4Ω: 1 X 2178 WRMS  
 POWER @ 2Ω: 1 X 3300 WRMS  
 POWER @ 1Ω: 1 X 5000 WRMS  
 OPERATING VOLTAGE: 8V – 16V  
 CURRENT DRAW (MUSIC): 254A  
 CURRENT DRAW (MAX): 509A  
 RECOMMENDED FUSE (MUSIC): 250A  
 TOTAL EFFICIENCY: 78%  
 DAMPING FACTOR: >1000  
 FREQUENCY RESPONSE (-3dB) 5Hz - 500Hz  
 SNR: 84dB  
 CROSSOVER LPF: 50Hz - 500Hz  
 SUBSONIC: 5Hz - 30Hz  
 THD + N (10% RATED POWER): 0.08%

## 2Ω

POWER @ 4Ω: 1 X 3300 WRMS  
 POWER @ 2Ω: 1 X 5000 WRMS  
 POWER @ 1Ω: 1 X N/A  
 OPERATING VOLTAGE: 8V – 16V  
 CURRENT DRAW (MUSIC): 254A  
 CURRENT DRAW (MAX): 509A  
 RECOMMENDED FUSE (MUSIC): 250A  
 TOTAL EFFICIENCY: 78%  
 DAMPING FACTOR: >1000  
 FREQUENCY RESPONSE (-3dB) 5Hz - 500Hz  
 SNR: 84dB  
 CROSSOVER LPF: 50Hz - 500Hz  
 SUBSONIC: 5Hz - 30Hz  
 THD + N (10% RATED POWER): 0.08%



8000.1



EVOX

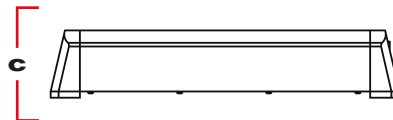
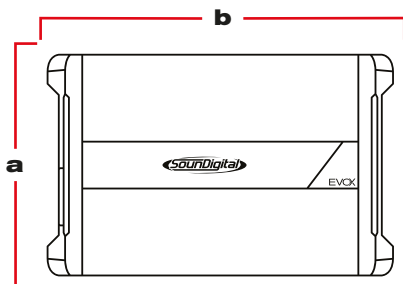
# SPECIFICATIONS



**INPUT**



**OUTPUT**



- A:** 8.8 IN / 22.5 CM
- B:** 13.9 IN / 35.4 CM
- C:** 2.8 IN / 7.1 CM



SD REMOTE  
LEVEL CONTROL  
**OPTIONAL**

## 1Ω

POWER @ 4Ω: 1 X 3485 WRMS  
 POWER @ 2Ω: 1 X 5280 WRMS  
 POWER @ 1Ω: 1 X 8000 WRMS  
 OPERATING VOLTAGE: 8V – 16V  
 CURRENT DRAW (MUSIC): 402A  
 CURRENT DRAW (MAX): 804A  
 RECOMMENDED FUSE (MUSIC): 500A  
 TOTAL EFFICIENCY: 79%  
 DAMPING FACTOR: >1000  
 FREQUENCY RESPONSE (-3dB) 5Hz - 500Hz  
 SNR: 82dB  
 CROSSOVER LPF: 50Hz - 500Hz  
 SUBSONIC: 5Hz - 30Hz  
 THD + N (10% RATED POWER): 0.08%

## 2Ω

POWER @ 4Ω: 1 X 5280 WRMS  
 POWER @ 2Ω: 1 X 8000 WRMS  
 POWER @ 1Ω: 1 X N/A  
 OPERATING VOLTAGE: 8V – 16V  
 CURRENT DRAW (MUSIC): 402A  
 CURRENT DRAW (MAX): 804A  
 RECOMMENDED FUSE (MUSIC): 500A  
 TOTAL EFFICIENCY: 79%  
 DAMPING FACTOR: >1000  
 FREQUENCY RESPONSE (-3dB) 5Hz - 500Hz  
 SNR: 82dB  
 CROSSOVER LPF: 50Hz - 500Hz  
 SUBSONIC: 5Hz - 30Hz  
 THD + N (10% RATED POWER): 0.08%



# 12000.1



## EVOX

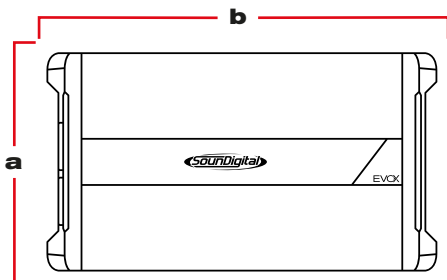
# SPECIFICATIONS



**INPUT**



**OUTPUT**



- A:** 8.8 IN / 22.5 CM
- B:** 20.8 IN / 53 CM
- C:** 2.8 IN / 7.1 CM



SD REMOTE  
LEVEL CONTROL  
**OPTIONAL**

## 1Ω

POWER @ 4Ω: 1 X 5227 WRMS  
 POWER @ 2Ω: 1 X 7920 WRMS  
 POWER @ 1Ω: 1 X 12000 WRMS  
 OPERATING VOLTAGE: 8V – 16V  
 CURRENT DRAW (MUSIC): 627A  
 CURRENT DRAW (MAX): 1253A  
 RECOMMENDED FUSE (MUSIC): 2 X 350A  
 TOTAL EFFICIENCY: 76%  
 DAMPING FACTOR: 200  
 FREQUENCY RESPONSE (-3dB): 5Hz – 500Hz  
 SNR: 76dB  
 CROSSOVER LPF: 50Hz – 500Hz  
 SUBSONIC: 5Hz – 30Hz  
 THD + N (10% RATED POWER): 0.1%

## 2Ω

POWER @ 4Ω: 1 X 7920 WRMS  
 POWER @ 2Ω: 1 X 12000 WRMS  
 POWER @ 1Ω: N/A  
 OPERATING VOLTAGE: 8V – 16V  
 CURRENT DRAW (MUSIC): 627A  
 CURRENT DRAW (MAX): 1253A  
 RECOMMENDED FUSE (MUSIC): 2 X 350A  
 TOTAL EFFICIENCY: 76%  
 DAMPING FACTOR: 200  
 FREQUENCY RESPONSE (-3dB): 5Hz – 500Hz  
 SNR: 76dB  
 CROSSOVER LPF: 50Hz – 500Hz  
 SUBSONIC: 5Hz – 30Hz  
 THD + N (10% RATED POWER): 0.1%



20000.1



EVOX

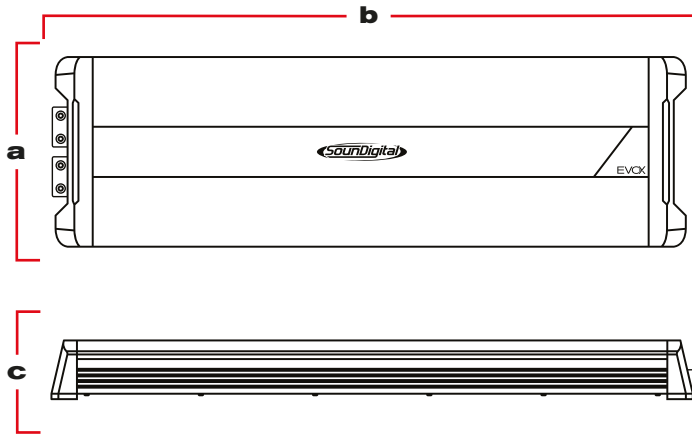
# SPECIFICATIONS



**INPUT**



**OUTPUT**



SD REMOTE  
LEVEL CONTROL  
**OPTIONAL**

**A:** 8.8 IN / 22.5 CM **B:** 33.9 IN / 86.3 CM **C:** 2.8 IN / 7.1 CM



POWER @ 4Ω: 1 X 8712 WRMS  
 POWER @ 2Ω: 1 X 13200 WRMS  
 POWER @ 1Ω: 1 X 20000 WRMS  
 OPERATING VOLTAGE : 8V – 16V  
 CURRENT DRAW (MUSIC): 980A  
 CURRENT DRAW (MAX): 1960A  
 RECOMMENDED FUSE (MUSIC): 1000A

TOTAL EFFICIENCY: 81%  
 DAMPING FACTOR: 200  
 FREQUENCY RESPONSE (-3dB): 5Hz – 500Hz  
 SNR: 76dB  
 CROSSOVER LPF: 50Hz – 500Hz  
 SUBSONIC: 5Hz – 30Hz  
 THD + N (10% RATED POWER): 0.2%



35000.1



EVOX



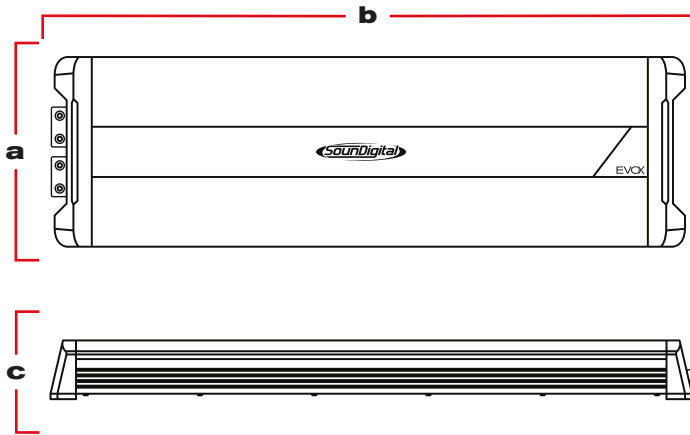
# SPECIFICATIONS



**INPUT**



**OUTPUT**



**A:** 8.8 IN / 22.5 CM **B:** 33.9 IN / 86.3 CM **C:** 2.8 IN / 7.1 CM



SD REMOTE  
LEVEL CONTROL  
**OPTIONAL**

**1Ω**

POWER @ 4Ω: 1 X 15246 WRMS  
 POWER @ 2Ω: 1 X 23100 WRMS  
 POWER @ 1Ω: 1 X 35000 WRMS  
 OPERATING VOLTAGE: 8V – 18V  
 CURRENT DRAW (MAX): 3429A  
 RECOMMENDED FUSE: 3500A  
 TOTAL EFFICIENCY: 81%

DAMPING FACTOR: 200  
 FREQUENCY RESPONSE (-3dB): 5Hz – 500 Hz  
 SNR: 76dB  
 CROSSOVER LPF: 50Hz – 500Hz  
 SUBSONIC: 5Hz – 30Hz  
 THD + N (10% RATED POWER): 0.3%

This amplifier can ONLY be used on SPL competitions for burps.





**EVOX**



EVOFS

# EVOFS







## **BUILT TO LAST**



**Water  
Resistant**



**Corrosion  
Protection**



**Vibration  
Protection**



**MOTORCYCLE**



**SLINGSHOT**



**UTV**



**OFF-ROAD**

## WATER RESISTANT

OUR EVOPS LINE IS PROTECTED AGAINST INGRESS OF DUST PARTICLES AND WATER DROPLETS FROM ALL SIDES, BEYOND THAT, THE CIRCUIT BOARD RECEIVES A CONFORMAL COATING TREATMENT TO PROTECT THE COMPONENTS FROM MOISTURE.



**IP64**



## ULTRA COMPACT PCB

WITH AN INTELLIGENT LAYOUT AND A GREAT USE OF THE PCB AREA, OUR AMPLIFIERS USE STATE OF THE ART COMPONENTS THAT GUARANTEE A SUPER COMPACT DESIGN, WITH GREAT THERMAL EFFICIENCY AND RELIABILITY.

## ROBUST CONSTRUCTION

OUR AMPLIFIER HAS AN EXTREMELY ROBUST MECHANICAL DESIGN, BOTH THE CONNECTION POINTS AND THE LAYOUT OF THE PCB WERE DESIGNED TO WITHSTAND HIGH VIBRATIONS, BUMPS AND ANY TYPE OF IMPACT.



800.1



EVOPS



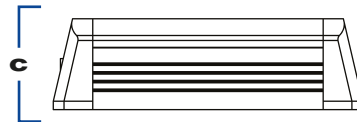
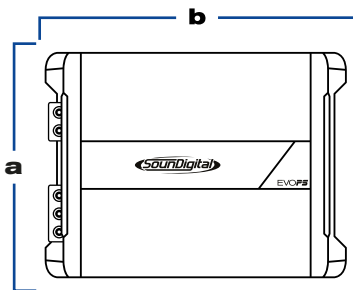
# SPECIFICATIONS



INPUT



OUTPUT



- A:** 5.1 IN / 13 CM
- B:** 5.7 IN / 14.4 CM
- C:** 2.2 IN / 5.6 CM

## 2Ω

POWER @ 4Ω: 1 X 528 WRMS  
 POWER @ 2Ω: 1 X 800 WRMS  
 POWER @ 1Ω: N/A  
 OPERATING VOLTAGE: 8V – 16V  
 CURRENT DRAW (MUSIC): 32A  
 CURRENT DRAW (MAX): 65A  
 RECOMMENDED FUSE (MUSIC): 40A  
 TOTAL EFFICIENCY: 85%  
 DAMPING FACTOR: 200  
 FREQUENCY RESPONSE (-3dB): 5Hz – 500Hz  
 SNR: 90dB  
 CROSSOVER LPF: 50Hz – 500Hz  
 SUBSONIC: 5Hz – 30Hz  
 THD + N (10% RATED POWER): 0.1%

## 4Ω

POWER @ 4Ω: 1 X 800 WRMS  
 POWER @ 2Ω: N/A  
 POWER @ 1Ω: N/A  
 OPERATING VOLTAGE: 8V – 16V  
 CURRENT DRAW (MUSIC): 32A  
 CURRENT DRAW (MAX): 65A  
 RECOMMENDED FUSE (MUSIC): 40A  
 TOTAL EFFICIENCY: 85%  
 DAMPING FACTOR: 200  
 FREQUENCY RESPONSE (-3dB): 5Hz – 500Hz  
 SNR: 90dB  
 CROSSOVER LPF: 50Hz – 500Hz  
 SUBSONIC: 5Hz – 30Hz  
 THD + N (10% RATED POWER): 0.1%



# 800.4



## EVO PS

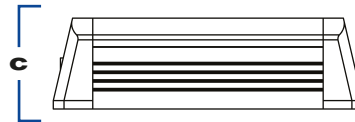
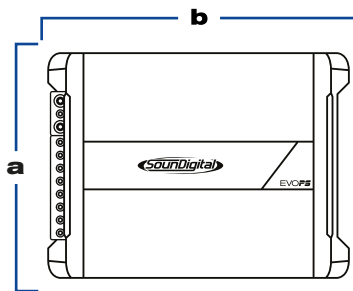
# SPECIFICATIONS



INPUT



OUTPUT



- A:** 5.1 IN / 13 CM
- B:** 5.7 IN / 14.4 CM
- C:** 2.2 IN / 5.6 CM

## 4Ω

POWER @ 4Ω: 4 X 132 WRMS  
 POWER @ 2Ω: 4 X 200 WRMS  
 POWER @ 1Ω: N/ A  
 BRIDGE POWER @ 4Ω: 2 X 400WRMS  
 BRIDGE POWER @ 2Ω: N/A  
 OPERATING VOLTAGE: 8V – 16V  
 CURRENT DRAW (MUSIC): 35A  
 CURRENT DRAW (MAX): 70A  
 RECOMMENDED FUSE (MUSIC): 40A

TOTAL EFFICIENCY: 79%  
 DAMPING FACTOR: 200  
 FREQUENCY RESPONSE (-3dB): 5Hz – 22kHz  
 SNR: 91dB  
 CROSSOVER HPF: 45Hz – 850Hz  
 CROSSOVER LPF: 45Hz – 850Hz  
 THD + N (10% RATED POWER): 0.1%



# 1200.4



# EVOFS

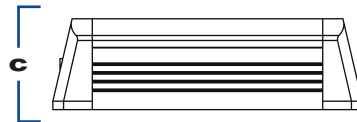
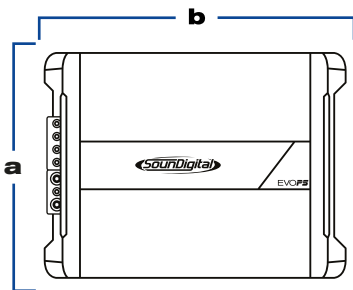
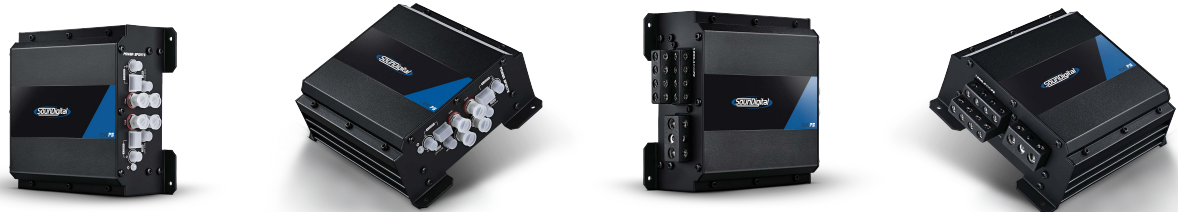
# SPECIFICATIONS



INPUT



OUTPUT



- A:** 5.8 IN / 14.9 CM
- B:** 6.5 IN / 16.6 CM
- C:** 2.4 IN / 6.2 CM

## 2Ω

POWER @ 4Ω: 4 X 130 WRMS  
 POWER @ 2Ω: 4 X 198 WRMS  
 POWER @ 1Ω: 4 X 300 WRMS  
 BRIDGE POWER @ 4Ω: 2 X 396 WRMS  
 BRIDGE POWER @ 2Ω: 2 X 600 WRMS  
 OPERATING VOLTAGE: 8V – 16V  
 CURRENT DRAW (MUSIC): 49A  
 CURRENT DRAW (MAX): 99A  
 RECOMMENDED FUSE (MUSIC): 60A  
 TOTAL EFFICIENCY: 84%  
 DAMPING FACTOR: 200  
 FREQUENCY RESPONSE (-3dB): 5Hz – 22kHz  
 SNR: 88dB  
 CROSSOVER HPF: 45Hz – 850Hz  
 CROSSOVER LPF: 45Hz – 850Hz  
 THD + N (10% RATED POWER): 0.1%

## 4Ω

POWER @ 4Ω: 4 X 198 WRMS  
 POWER @ 2Ω: 4 X 300 WRMS  
 POWER @ 1Ω: N/A  
 BRIDGE POWER @ 4Ω: 2 X 600 WRMS  
 BRIDGE POWER @ 2Ω: N/A  
 OPERATING VOLTAGE: 8V – 16V  
 CURRENT DRAW (MUSIC): 50A  
 CURRENT DRAW (MAX): 101A  
 RECOMMENDED FUSE (MUSIC): 60A  
 TOTAL EFFICIENCY: 82%  
 DAMPING FACTOR: 200  
 FREQUENCY RESPONSE (-3dB): 5Hz – 22kHz  
 SNR: 91dB  
 CROSSOVER HPF: 45Hz – 850Hz  
 CROSSOVER LPF: 45Hz – 850Hz  
 THD + N (10% RATED POWER): 0.1%



# 2000.4



# EVO PS

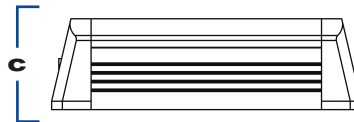
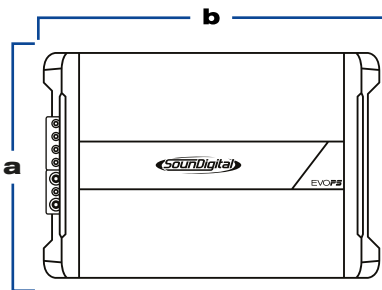
# SPECIFICATIONS



INPUT



OUTPUT



- A:** 5.8 IN / 14.9 CM
- B:** 8.4 IN / 21.4 CM
- C:** 2.4 IN / 6.2 CM

## 2Ω

POWER @ 4Ω: 4 X 217 WRMS  
 POWER @ 2Ω: 4 X 330 WRMS  
 POWER @ 1Ω: 4 X 500 WRMS  
 BRIDGE POWER @ 4Ω: 2 X 660 WRMS  
 BRIDGE POWER @ 2Ω: 2 X 1000 WRMS  
 OPERATING VOLTAGE : 8V – 16V  
 CURRENT DRAW (MUSIC): 85A  
 CURRENT DRAW (MAX): 171A  
 RECOMMENDED FUSE (MUSIC): 100 A  
 TOTAL EFFICIENCY: 81%  
 DAMPING FACTOR: 200  
 FREQUENCY RESPONSE (-3dB): 5Hz – 22kHz  
 SNR: 90dB  
 CROSSOVER HPF: 45Hz – 850Hz  
 CROSSOVER LPF: 45Hz – 850Hz  
 THD + N (10% RATED POWER): 0.1%

## 4Ω

POWER @ 4Ω: 4 X 330 WRMS  
 POWER @ 2Ω: 4 X 500 WRMS  
 POWER @ 1Ω: N/ A  
 BRIDGE POWER @ 4Ω: 2 X 1000 WRMS  
 BRIDGE POWER @ 2Ω: N/A  
 OPERATING VOLTAGE : 8V – 16V  
 CURRENT DRAW (MUSIC): 85A  
 CURRENT DRAW (MAX): 171A  
 RECOMMENDED FUSE (MUSIC): 100A  
 TOTAL EFFICIENCY: 81%  
 DAMPING FACTOR: 200  
 FREQUENCY RESPONSE (-3dB): 5Hz – 22kHz  
 SNR: 90dB  
 CROSSOVER HPF: 45Hz – 850Hz  
 CROSSOVER LPF: 45Hz – 850Hz  
 THD + N (10% RATED POWER): 0.1%





Consumer  
Technology  
Association™



 [WWW.SOUNDIGITALUSA.COM](http://WWW.SOUNDIGITALUSA.COM)

 [SOUNDIGITALUSA](https://www.facebook.com/SOUNDIGITALUSA)

 [SOUNDIGITALUSA](https://www.instagram.com/SOUNDIGITALUSA)