



2021

EVOX

EVOPS****



ABOUT US

In the early 90's, an electrical engineering student named Juliano Anflor decided to develop a car audio amplifier for a college project. What started as a hobby, turned into a passion, and some years later into the business of his life.

Always innovating and searching for new technologies, SounDigital, has earned its place in the hearts of car audio, motorcycle and powersports dealers across the globe.

SounDigital products are sold in over 50 countries worldwide.

SUMMARY

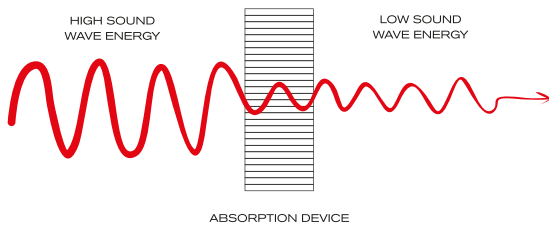
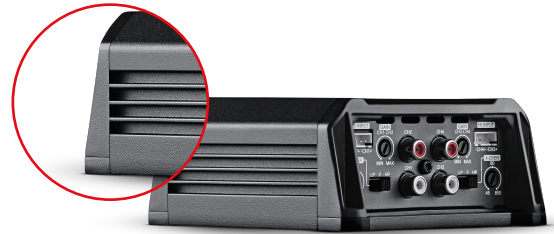
EVOX	04
TECHNOLOGY	05
400.2 EVOX	07
400.4 EVOX	09
800.1 EVOX	11
800.4 EVOX	13
1200.2 EVOX	15
1200.4 EVOX	17
1600.1 EVOX	19
2400.4 EVOX	21
3000.1 EVOX	23
5000.1 EVOX	25
8000.1 EVOX	27
12000.1 EVOX	29
20000.1 EVOX	31
35000.1 EVOX	33
EVOPS	36
BUILT TO LAST	38
TECHNOLOGY	39
800.1 EVOPS	41
800.4 EVOPS	43
1200.4 EVOPS	45
2000.4 EVOPS	47

EVOX

TECHNOLOGY

DYNAMIC THERMAL MANAGEMENT - DTM®

OUR PATENTED DTM® TECHNOLOGY PROVIDES A FASTER HEAT EXCHANGE BETWEEN THE ELECTRONIC COMPONENTS AND THE HEATSINK, INCREASING THE EFFICIENCY OF OUR AMPLIFIERS AND RESULTING IN LOWER DISTORTION LEVELS DURING LONG PLAYING TIME.

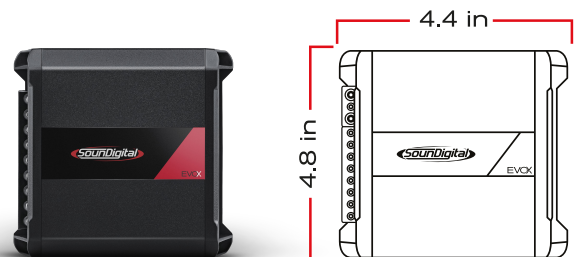


VIBRATION ABSORPTION DEVICE - VAD®

OUR VAD® TECHNOLOGY REDUCES ALL IMPACT CAUSED BY VIBRATION ON THE ELECTRONIC CIRCUIT BOARD. THIS CAN INCLUDE ROAD VIBRATION AND EVEN VIBRATION CAUSED BY SOUND WAVES, INCREASING THE RELIABILITY OF OUR AMPLIFIERS.

REDUCED SIZE

THE TECHNOLOGY USED IN OUR AMPLIFIERS BRING BOTH HIGH PERFORMANCE AND POWER IN A COMPACT CHASSIS, PROVIDING FLEXIBLE INSTALLATION SOLUTIONS FOR VEHICLES WITH LIMITED SPACE.



400.2



EVOX

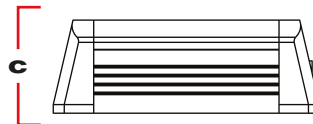
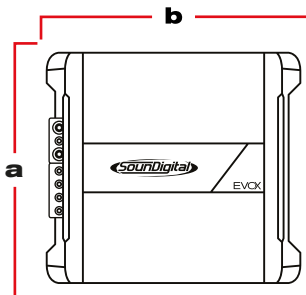
SPECIFICATIONS



INPUT



OUTPUT



- A:** 4.4 IN / 11.3 CM
- B:** 4.8 IN / 12.3 CM
- C:** 2.0 IN / 5.1 CM

4Ω

POWER @ 4Ω: 2 X 132 WRMS
 POWER @ 2Ω: 2 X 200 WRMS
 POWER @ 1Ω: N/A
 BRIDGE POWER @ 4Ω: 1 X 400 WRMS
 BRIDGE POWER @ 2Ω: N/A
 OPERATING VOLTAGE: 8V – 16V
 CURRENT DRAW (MUSIC): 18A
 CURRENT DRAW (MAX): 36A
 RECOMMENDED FUSE (MUSIC): 20A

TOTAL EFFICIENCY: 88%
 DAMPING FACTOR: 200
 FREQUENCY RESPONSE (-3dB): 5Hz – 22 kHz
 SNR: 88dB
 CROSSOVER HPF: 45Hz – 850Hz
 CROSSOVER LPF: 45Hz – 850Hz
 THD + N (10% RATED POWER): 0.1%



400.4



EVOX

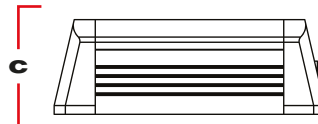
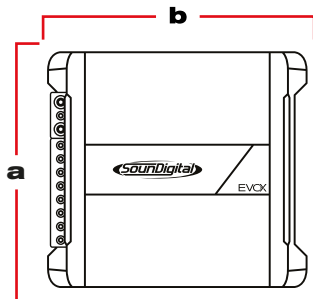
SPECIFICATIONS



INPUT



OUTPUT



- A:** 4.4 IN / 11.3 CM
- B:** 4.8 IN / 12.3 CM
- C:** 2.0 IN / 5.1 CM

4Ω

POWER @ 4Ω: 4 X 66 WRMS
 POWER @ 2Ω: 4 X 100 WRMS
 POWER @ 1Ω: N/ A
 BRIDGE POWER @ 4Ω: 2 X 200 WRMS
 BRIDGE POWER @ 2Ω: N/A
 OPERATING VOLTAGE: 8V – 16V
 CURRENT DRAW (MUSIC): 19A
 CURRENT DRAW (MAX): 39A
 RECOMMENDED FUSE (MUSIC): 20A

TOTAL EFFICIENCY: 82%
 DAMPING FACTOR: 200
 FREQUENCY RESPONSE (-3dB): 5Hz – 22 kHz
 SNR: 88dB
 CROSSOVER HPF: 45Hz – 850Hz
 CROSSOVER LPF: 45Hz – 850Hz
 THD + N (10% RATED POWER): 0.1%



800.1



EVOX

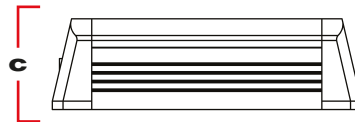
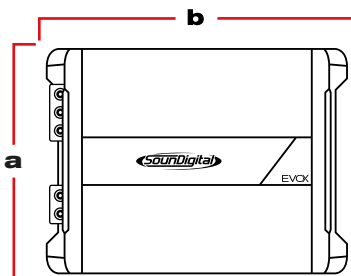
SPECIFICATIONS



INPUT



OUTPUT



- A:** 4.4 IN / 11.3 CM
- B:** 5.8 IN / 14.8 CM
- C:** 2.0 IN / 5.1 CM

2Ω

POWER @ 4Ω: 1 X 528 WRMS
 POWER @ 2Ω: 1 X 800 WRMS
 POWER @ 1Ω: N/A
 OPERATING VOLTAGE : 8V – 16V
 CURRENT DRAW (MUSIC): 38A
 CURRENT DRAW (MAX): 74A
 RECOMMENDED FUSE (MUSIC): 40A
 TOTAL EFFICIENCY: 85%
 DAMPING FACTOR: 200
 FREQUENCY RESPONSE (-3dB): 5Hz – 500Hz
 SNR: 90dB
 SUBSONIC FILTER: 5Hz – 30Hz
 CROSSOVER LPF: 50Hz – 500Hz
 THD + N (10% RATED POWER): 0.1%

4Ω

POWER @ 4Ω: 1 X 800 WRMS
 POWER @ 2Ω: N/A
 POWER @ 1Ω: N/A
 OPERATING VOLTAGE : 8V – 16V
 CURRENT DRAW (MUSIC): 38A
 CURRENT DRAW (MAX): 74A
 RECOMMENDED FUSE (MUSIC): 40A
 TOTAL EFFICIENCY: 85%
 DAMPING FACTOR: 200
 FREQUENCY RESPONSE (-3dB): 5Hz – 500Hz
 SNR: 90dB
 SUBSONIC FILTER: 5Hz – 30Hz
 CROSSOVER LPF: 50Hz – 500Hz
 THD + N (10% RATED POWER): 0.1%



800.4



EVOX

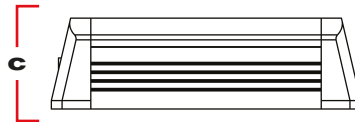
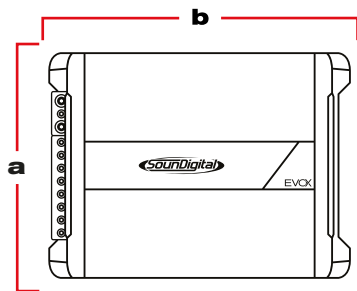
SPECIFICATIONS



INPUT



OUTPUT



- A:** 4.4 IN / 11.3 CM
- B:** 5.8 IN / 14.8 CM
- C:** 2.0 IN / 5.1 CM

4Ω

POWER @ 4Ω: 4 X 132 WRMS
 POWER @ 2Ω: 4 X 200 WRMS
 POWER @ 1Ω: N/A
 BRIDGE POWER @ 4Ω: 2 X 400 WRMS
 BRIDGE POWER @ 2Ω: N/A
 OPERATING VOLTAGE: 8V – 16V
 CURRENT DRAW (MUSIC): 40A
 CURRENT DRAW (MAX): 80A
 RECOMMENDED FUSE (MUSIC): 40A

TOTAL EFFICIENCY: 79%
 DAMPING FACTOR: 200
 FREQUENCY RESPONSE (-3dB): 5Hz – 22kHz
 SNR: 91dB
 CROSSOVER HPF: 45Hz – 850Hz
 CROSSOVER LPF: 45Hz – 850Hz
 THD + N (10% RATED POWER): 0.1%



1200.2



EVOX

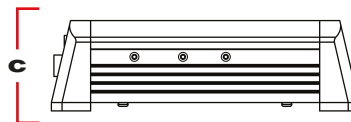
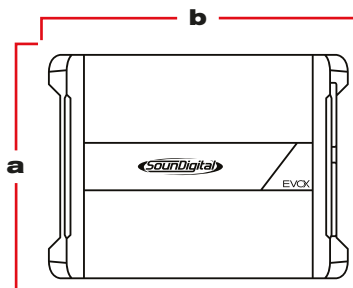
SPECIFICATIONS



INPUT



OUTPUT



- A:** 5.4 IN / 13.6 CM
- B:** 7.1 IN / 18.1 CM
- C:** 2.2 IN / 5.5 CM

2Ω

POWER @ 4Ω: 2 X 262 WRMS
 POWER @ 2Ω: 2 X 396 WRMS
 POWER @ 1Ω: 2 X 600 W RMS
 BRIDGE POWER @ 4Ω: 1 X 792 WRMS
 BRIDGE POWER @ 2Ω: 1 X 1200 WRMS
 OPERATING VOLTAGE: 8V – 16V
 CURRENT DRAW (MUSIC): 57A
 CURRENT DRAW (MAX): 115A
 RECOMMENDED FUSE (MUSIC): 60A
 TOTAL EFFICIENCY: 83%
 DAMPING FACTOR: 200
 FREQUENCY RESPONSE (-3dB): 5Hz – 22kHz
 SNR: 91dB
 CROSSOVER HPF: 45Hz – 850Hz
 CROSSOVER LPF: 45Hz – 850Hz
 THD + N (10% RATED POWER): 0.1%

4Ω

POWER @ 4Ω: 2 X 396 WRMS
 POWER @ 2Ω: 2 X 600 WRMS
 POWER @ 1Ω: N/A
 BRIDGE POWER @ 4Ω: 1 X 1200 WRMS
 BRIDGE POWER @ 2Ω: N/A
 OPERATING VOLTAGE: 8V – 16V
 CURRENT DRAW (MUSIC): 58A
 CURRENT DRAW (MAX): 116A
 RECOMMENDED FUSE (MUSIC): 60A
 TOTAL EFFICIENCY: 82%
 DAMPING FACTOR: 200
 FREQUENCY RESPONSE (-3dB): 5Hz – 22kHz
 SNR: 91dB
 CROSSOVER HPF: 45Hz – 850Hz
 CROSSOVER LPF: 45Hz – 850Hz
 THD + N (10% RATED POWER): 0.1%



1200.4



EVOX

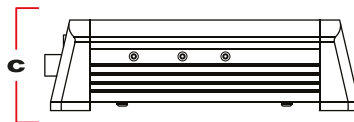
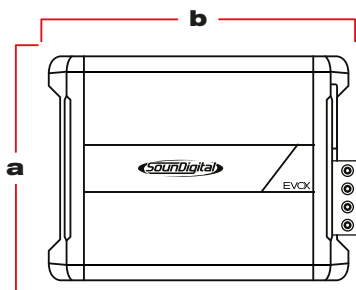
SPECIFICATIONS



INPUT



OUTPUT



- A:** 5.4 IN / 13.6 CM
- B:** 7.1 IN / 18.1 CM
- C:** 2.2 IN / 5.5 CM

2Ω

POWER @ 4Ω: 4 X 131 WRMS
 POWER @ 2Ω: 4 X 198 WRMS
 POWER @ 1Ω: 4 X 300 WRMS
 BRIDGE POWER @ 4Ω: 2 X 396 WRMS
 BRIDGE POWER @ 2Ω: 2 X 600 WRMS
 OPERATING VOLTAGE: 8V – 16V
 CURRENT DRAW (MUSIC): 57A
 CURRENT DRAW (MAX): 113A
 RECOMMENDED FUSE (MUSIC): 60A
 TOTAL EFFICIENCY: 84%
 DAMPING FACTOR: 200
 FREQUENCY RESPONSE (-3dB): 5Hz – 22kHz
 SNR: 88dB
 CROSSOVER HPF: 45Hz – 850Hz
 CROSSOVER LPF: 45Hz – 850Hz
 THD + N (10% RATED POWER): 0.1%

4Ω

POWER @ 4Ω: 4 X 198 WRMS
 POWER @ 2Ω: 4 X 300 WRMS
 POWER @ 1Ω: N/A
 BRIDGE POWER @ 4Ω: 2 X 600 WRMS
 BRIDGE POWER @ 2Ω: N/A
 OPERATING VOLTAGE: 8V – 16V
 CURRENT DRAW (MUSIC): 58A
 CURRENT DRAW (MAX): 116A
 RECOMMENDED FUSE (MUSIC): 60A
 TOTAL EFFICIENCY: 82%
 DAMPING FACTOR: 200
 FREQUENCY RESPONSE (-3dB): 5Hz – 22kHz
 SNR: 91dB
 CROSSOVER HPF: 45Hz – 850Hz
 CROSSOVER LPF: 45Hz – 850Hz
 THD + N (10% RATED POWER): 0.1%



1600.1



EVOX

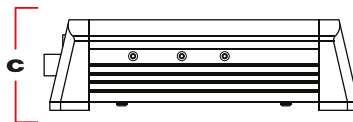
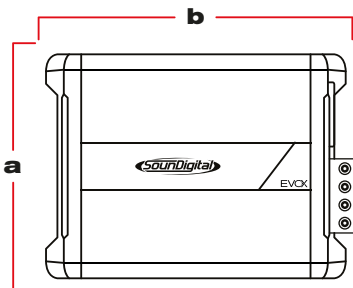
SPECIFICATIONS



INPUT



OUTPUT



- A:** 5.3 IN / 13.6 CM
- B:** 7 IN / 18 CM
- C:** 2.2 IN / 5.5 CM



SD REMOTE
LEVEL CONTROL
OPTIONAL

1Ω

POWER @ 4Ω: 1 X 697 WRMS
 POWER @ 2Ω: 1 X 1056 WRMS
 POWER @ 1Ω: 1 X 1600 WRMS
 OPERATING VOLTAGE: 8V – 16V
 CURRENT DRAW (MUSIC): 62A
 CURRENT DRAW (MAX): 125A
 RECOMMENDED FUSE (MUSIC): 70A
 TOTAL EFFICIENCY: 89%
 DAMPING FACTOR: >2000
 FREQUENCY RESPONSE (-3dB): 5Hz – 25kHz
 SNR: 94dB
 CROSSOVER LPF: 50Hz - 500Hz
 SUBSONIC: 5Hz - 30Hz
 THD + N (10% RATED POWER): 0.1%

2Ω

POWER @ 4Ω: 1 X 1056 WRMS
 POWER @ 2Ω: 1 X 1600 WRMS
 POWER @ 1Ω: 1 X N/A
 OPERATING VOLTAGE: 8V – 16V
 CURRENT DRAW (MUSIC): 62A
 CURRENT DRAW (MAX): 125A
 RECOMMENDED FUSE (MUSIC): 70A
 TOTAL EFFICIENCY: 89%
 DAMPING FACTOR: >2000
 FREQUENCY RESPONSE (-3dB): 5Hz – 25kHz
 SNR: 94dB
 CROSSOVER LPF: 50Hz - 500Hz
 SUBSONIC: 5Hz - 30Hz
 THD + N (10% RATED POWER): 0.1%



2400.4



EVOX

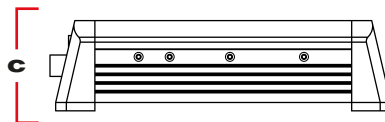
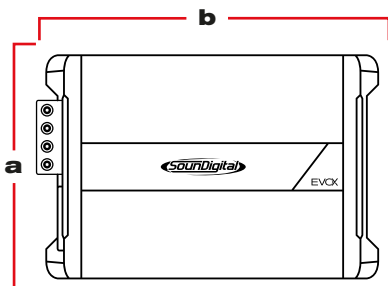
SPECIFICATIONS



INPUT



OUTPUT



- A:** 5.4 IN / 13.6 CM
- B:** 8.9 IN / 22.7 CM
- C:** 2.2 IN / 5.5 CM

2Ω

POWER @ 4Ω: 4 X 262 WRMS
 POWER @ 2Ω: 4 X 396 WRMS
 POWER @ 1Ω: 4 X 600 WRMS
 BRIDGE POWER @ 4Ω: 2 X 792 WRMS
 BRIDGE POWER @ 2Ω: 2 X 1200 WRMS
 OPERATING VOLTAGE: 8V – 16V
 CURRENT DRAW (MUSIC): 121A
 CURRENT DRAW (MAX): 241A
 RECOMMENDED FUSE (MUSIC): 140A
 TOTAL EFFICIENCY: 79%
 DAMPING FACTOR: 200
 FREQUENCY RESPONSE (-3dB): 5Hz – 22kHz
 SNR: 90dB
 CROSSOVER HPF: 45Hz – 850Hz
 CROSSOVER LPF: 45Hz – 850Hz
 THD + N (10% RATED POWER): 0.1%

4Ω

POWER @ 4Ω: 4 X 396 WRMS
 POWER @ 2Ω: 4 X 600 WRMS
 POWER @ 1Ω: N/A
 BRIDGE POWER @ 4Ω: 2 X 1200 WRMS
 BRIDGE POWER @ 2Ω: N/A
 OPERATING VOLTAGE: 8V – 16V
 CURRENT DRAW (MUSIC): 121A
 CURRENT DRAW (MAX): 241A
 RECOMMENDED FUSE (MUSIC): 140A
 TOTAL EFFICIENCY: 79%
 DAMPING FACTOR: 200
 FREQUENCY RESPONSE (-3dB): 5Hz – 22kHz
 SNR: 90dB
 CROSSOVER HPF: 45Hz – 850Hz
 CROSSOVER LPF: 45Hz – 850Hz
 THD + N (10% RATED POWER): 0.1%



3000.1



EVOX

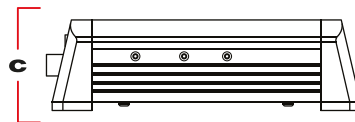
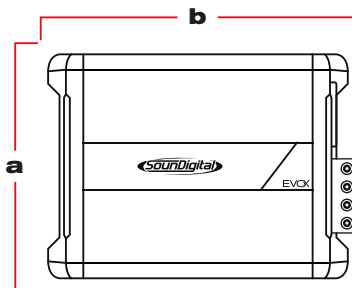
SPECIFICATIONS



INPUT



OUTPUT



- A:** 5.3 IN / 13.6 CM
- B:** 8.9 IN / 22.8 CM
- C:** 2.1 IN / 5.5 CM



SD REMOTE
LEVEL CONTROL
OPTIONAL

1Ω

POWER @ 4Ω: 1 X 1307 WRMS
 POWER @ 2Ω: 1 X 1980 WRMS
 POWER @ 1Ω: 1 X 3000 WRMS
 OPERATING VOLTAGE: 8V – 16V
 CURRENT DRAW (MUSIC): 121A
 CURRENT DRAW (MAX): 242A
 RECOMMENDED FUSE (MUSIC): 140A
 TOTAL EFFICIENCY: 86%
 DAMPING FACTOR: >2000
 FREQUENCY RESPONSE (-3dB): 5Hz – 25kHz
 SNR: 90dB
 CROSSOVER LPF: 50Hz - 500Hz
 SUBSONIC: 5Hz - 30Hz
 THD + N (10% RATED POWER): 0.1%

2Ω

POWER @ 4Ω: 1 X 1980 WRMS
 POWER @ 2Ω: 1 X 3000 WRMS
 POWER @ 1Ω: 1 X N/A
 OPERATING VOLTAGE: 8V – 16V
 CURRENT DRAW (MUSIC): 121A
 CURRENT DRAW (MAX): 242A
 RECOMMENDED FUSE (MUSIC): 140A
 TOTAL EFFICIENCY: 86%
 DAMPING FACTOR: >2000
 FREQUENCY RESPONSE (-3dB): 5Hz – 25kHz
 SNR: 90dB
 CROSSOVER LPF: 50Hz - 500Hz
 SUBSONIC: 5Hz - 30Hz
 THD + N (10% RATED POWER): 0.1%



5000.1



EVOX

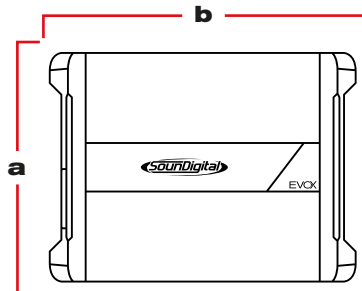
SPECIFICATIONS



INPUT



OUTPUT



A: 8.8 IN / 22.5 CM
B: 11.8 IN / 29.9 CM
C: 2.8 IN / 7.1 CM



SD REMOTE
 LEVEL CONTROL
OPTIONAL

1Ω

POWER @ 4Ω: 1 X 2178 WRMS
 POWER @ 2Ω: 1 X 3300 WRMS
 POWER @ 1Ω: 1 X 5000 WRMS
 OPERATING VOLTAGE: 8V – 16V
 CURRENT DRAW (MUSIC): 254A
 CURRENT DRAW (MAX): 509A
 RECOMMENDED FUSE (MUSIC): 250A
 TOTAL EFFICIENCY: 78%
 DAMPING FACTOR: >1000
 FREQUENCY RESPONSE (-3dB) 5Hz - 500Hz
 SNR: 84dB
 CROSSOVER LPF: 50Hz - 500Hz
 SUBSONIC: 5Hz - 30Hz
 THD + N (10% RATED POWER): 0.08%

2Ω

POWER @ 4Ω: 1 X 3300 WRMS
 POWER @ 2Ω: 1 X 5000 WRMS
 POWER @ 1Ω: 1 X N/A
 OPERATING VOLTAGE: 8V – 16V
 CURRENT DRAW (MUSIC): 254A
 CURRENT DRAW (MAX): 509A
 RECOMMENDED FUSE (MUSIC): 250A
 TOTAL EFFICIENCY: 78%
 DAMPING FACTOR: >1000
 FREQUENCY RESPONSE (-3dB) 5Hz - 500Hz
 SNR: 84dB
 CROSSOVER LPF: 50Hz - 500Hz
 SUBSONIC: 5Hz - 30Hz
 THD + N (10% RATED POWER): 0.08%



8000.1



EVOX

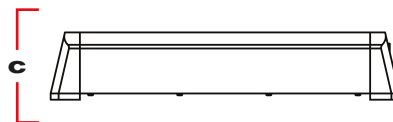
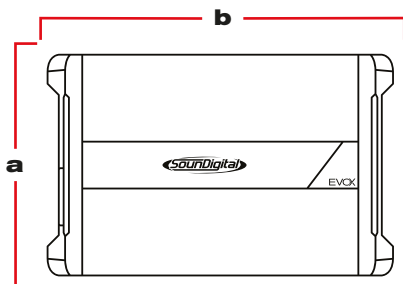
SPECIFICATIONS



INPUT



OUTPUT



- A:** 8.8 IN / 22.5 CM
- B:** 13.9 IN / 35.4 CM
- C:** 2.8 IN / 7.1 CM



SD REMOTE
LEVEL CONTROL
OPTIONAL

1Ω

POWER @ 4Ω: 1 X 3485 WRMS
 POWER @ 2Ω: 1 X 5280 WRMS
 POWER @ 1Ω: 1 X 8000 WRMS
 OPERATING VOLTAGE: 8V – 16V
 CURRENT DRAW (MUSIC): 402A
 CURRENT DRAW (MAX): 804A
 RECOMMENDED FUSE (MUSIC): 500A
 TOTAL EFFICIENCY: 79%
 DAMPING FACTOR: >1000
 FREQUENCY RESPONSE (-3dB) 5Hz - 500Hz
 SNR: 82dB
 CROSSOVER LPF: 50Hz - 500Hz
 SUBSONIC: 5Hz - 30Hz
 THD + N (10% RATED POWER): 0.08%

2Ω

POWER @ 4Ω: 1 X 5280 WRMS
 POWER @ 2Ω: 1 X 8000 WRMS
 POWER @ 1Ω: 1 X N/A
 OPERATING VOLTAGE: 8V – 16V
 CURRENT DRAW (MUSIC): 402A
 CURRENT DRAW (MAX): 804A
 RECOMMENDED FUSE (MUSIC): 500A
 TOTAL EFFICIENCY: 79%
 DAMPING FACTOR: >1000
 FREQUENCY RESPONSE (-3dB) 5Hz - 500Hz
 SNR: 82dB
 CROSSOVER LPF: 50Hz - 500Hz
 SUBSONIC: 5Hz - 30Hz
 THD + N (10% RATED POWER): 0.08%



12000.1



EVOX

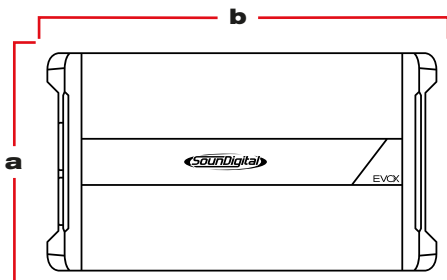
SPECIFICATIONS



INPUT



OUTPUT



- A:** 8.8 IN / 22.5 CM
- B:** 20.8 IN / 53 CM
- C:** 2.8 IN / 7.1 CM



SD REMOTE
LEVEL CONTROL
OPTIONAL

1Ω

POWER @ 4Ω: 1 X 5227 WRMS
 POWER @ 2Ω: 1 X 7920 WRMS
 POWER @ 1Ω: 1 X 12000 WRMS
 OPERATING VOLTAGE: 8V – 16V
 CURRENT DRAW (MUSIC): 627A
 CURRENT DRAW (MAX): 1253A
 RECOMMENDED FUSE (MUSIC): 2 X 350A
 TOTAL EFFICIENCY: 76%
 DAMPING FACTOR: 200
 FREQUENCY RESPONSE (-3dB): 5Hz – 500Hz
 SNR: 76dB
 CROSSOVER LPF: 50Hz – 500Hz
 SUBSONIC: 5Hz – 30Hz
 THD + N (10% RATED POWER): 0.1%

2Ω

POWER @ 4Ω: 1 X 7920 WRMS
 POWER @ 2Ω: 1 X 12000 WRMS
 POWER @ 1Ω: N/A
 OPERATING VOLTAGE: 8V – 16V
 CURRENT DRAW (MUSIC): 627A
 CURRENT DRAW (MAX): 1253A
 RECOMMENDED FUSE (MUSIC): 2 X 350A
 TOTAL EFFICIENCY: 76%
 DAMPING FACTOR: 200
 FREQUENCY RESPONSE (-3dB): 5Hz – 500Hz
 SNR: 76dB
 CROSSOVER LPF: 50Hz – 500Hz
 SUBSONIC: 5Hz – 30Hz
 THD + N (10% RATED POWER): 0.1%



20000.1



EVOX

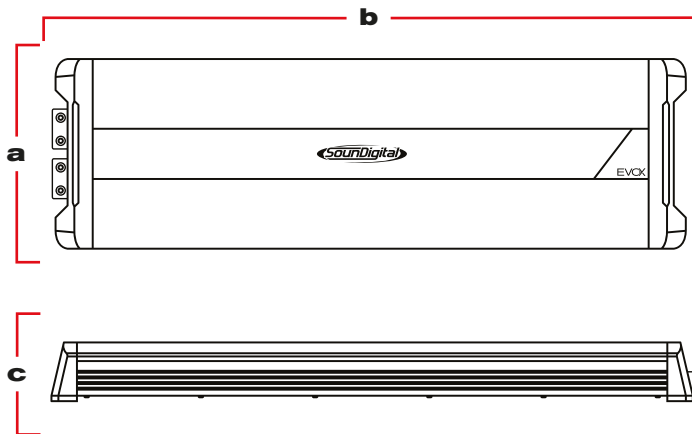
SPECIFICATIONS



INPUT



OUTPUT



A: 8.8 IN / 22.5 CM **B:** 33.9 IN / 86.3 CM **C:** 2.8 IN / 7.1 CM



SD REMOTE
LEVEL CONTROL
OPTIONAL



POWER @ 4Ω: 1 X 8712 WRMS
 POWER @ 2Ω: 1 X 13200 WRMS
 POWER @ 1Ω: 1 X 20000 WRMS
 OPERATING VOLTAGE : 8V – 16V
 CURRENT DRAW (MUSIC): 980A
 CURRENT DRAW (MAX): 1960A
 RECOMMENDED FUSE (MUSIC): 1000A

TOTAL EFFICIENCY: 81%
 DAMPING FACTOR: 200
 FREQUENCY RESPONSE (-3dB): 5Hz – 500Hz
 SNR: 76dB
 CROSSOVER LPF: 50Hz – 500Hz
 SUBSONIC: 5Hz – 30Hz
 THD + N (10% RATED POWER): 0.2%



35000.1



EVOX

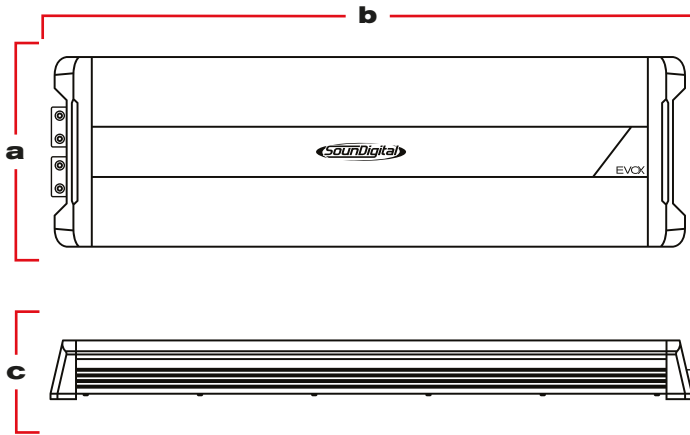
SPECIFICATIONS



INPUT



OUTPUT



A: 8.8 IN / 22.5 CM **B:** 33.9 IN / 86.3 CM **C:** 2.8 IN / 7.1 CM



SD REMOTE
LEVEL CONTROL
OPTIONAL

1Ω

POWER @ 4Ω: 1 X 15246 WRMS
 POWER @ 2Ω: 1 X 23100 WRMS
 POWER @ 1Ω: 1 X 35000 WRMS
 OPERATING VOLTAGE: 8V – 18V
 CURRENT DRAW (MAX): 3429A
 RECOMMENDED FUSE: 3500A
 TOTAL EFFICIENCY: 81%

DAMPING FACTOR: 200
 FREQUENCY RESPONSE (-3dB): 5Hz – 500 Hz
 SNR: 76dB
 CROSSOVER LPF: 50Hz – 500Hz
 SUBSONIC: 5Hz – 30Hz
 THD + N (10% RATED POWER): 0.3%

This amplifier can ONLY be used on SPL competitions for burps.





EVOX



EVOFS

EVO **FS**







BUILT TO LAST



**Water
Resistant**



**Corrosion
Protection**



**Vibration
Protection**



MOTORCYCLE



SLINGSHOT



UTV



OFF-ROAD

TECHNOLOGY

WATER RESISTANT

OUR EVOPS LINE IS PROTECTED AGAINST INGRESS OF DUST PARTICLES AND WATER DROPLETS FROM ALL SIDES, BEYOND THAT, THE CIRCUIT BOARD RECEIVES A CONFORMAL COATING TREATMENT TO PROTECT THE COMPONENTS FROM MOISTURE.



IP64



ULTRA COMPACT PCB

WITH AN INTELLIGENT LAYOUT AND A GREAT USE OF THE PCB AREA, OUR AMPLIFIERS USE STATE OF THE ART COMPONENTS THAT GUARANTEE A SUPER COMPACT DESIGN, WITH GREAT THERMAL EFFICIENCY AND RELIABILITY.

ROBUST CONSTRUCTION

OUR AMPLIFIER HAS AN EXTREMELY ROBUST MECHANICAL DESIGN, BOTH THE CONNECTION POINTS AND THE LAYOUT OF THE PCB WERE DESIGNED TO WITHSTAND HIGH VIBRATIONS, BUMPS AND ANY TYPE OF IMPACT.



800.1



EVOPS

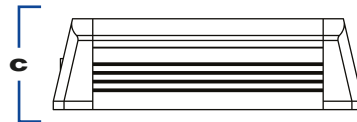
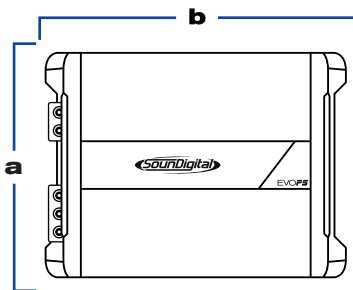
SPECIFICATIONS



INPUT



OUTPUT



- A:** 5.1 IN / 13 CM
- B:** 5.7 IN / 14.4 CM
- C:** 2.2 IN / 5.6 CM

2Ω

POWER @ 4Ω: 1 X 528 WRMS
 POWER @ 2Ω: 1 X 800 WRMS
 POWER @ 1Ω: N/A
 OPERATING VOLTAGE: 8V – 16V
 CURRENT DRAW (MUSIC): 32A
 CURRENT DRAW (MAX): 65A
 RECOMMENDED FUSE (MUSIC): 40A
 TOTAL EFFICIENCY: 85%
 DAMPING FACTOR: 200
 FREQUENCY RESPONSE (-3dB): 5Hz – 500Hz
 SNR: 90dB
 CROSSOVER LPF: 50Hz – 500Hz
 SUBSONIC: 5Hz – 30Hz
 THD + N (10% RATED POWER): 0.1%

4Ω

POWER @ 4Ω: 1 X 800 WRMS
 POWER @ 2Ω: N/A
 POWER @ 1Ω: N/A
 OPERATING VOLTAGE: 8V – 16V
 CURRENT DRAW (MUSIC): 32A
 CURRENT DRAW (MAX): 65A
 RECOMMENDED FUSE (MUSIC): 40A
 TOTAL EFFICIENCY: 85%
 DAMPING FACTOR: 200
 FREQUENCY RESPONSE (-3dB): 5Hz – 500Hz
 SNR: 90dB
 CROSSOVER LPF: 50Hz – 500Hz
 SUBSONIC: 5Hz – 30Hz
 THD + N (10% RATED POWER): 0.1%



800.4



EVO PS

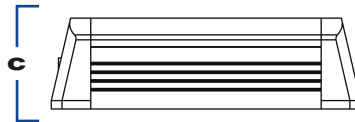
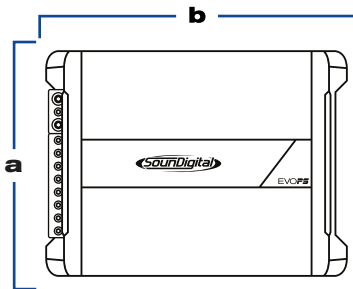
SPECIFICATIONS



INPUT



OUTPUT



- A:** 5.1 IN / 13 CM
- B:** 5.7 IN / 14.4 CM
- C:** 2.2 IN / 5.6 CM

4Ω

POWER @ 4Ω: 4 X 132 WRMS
 POWER @ 2Ω: 4 X 200 WRMS
 POWER @ 1Ω: N/ A
 BRIDGE POWER @ 4Ω: 2 X 400WRMS
 BRIDGE POWER @ 2Ω: N/A
 OPERATING VOLTAGE: 8V – 16V
 CURRENT DRAW (MUSIC): 35A
 CURRENT DRAW (MAX): 70A
 RECOMMENDED FUSE (MUSIC): 40A

TOTAL EFFICIENCY: 79%
 DAMPING FACTOR: 200
 FREQUENCY RESPONSE (-3dB): 5Hz – 22kHz
 SNR: 91dB
 CROSSOVER HPF: 45Hz – 850Hz
 CROSSOVER LPF: 45Hz – 850Hz
 THD + N (10% RATED POWER): 0.1%



1200.4



EVOFS

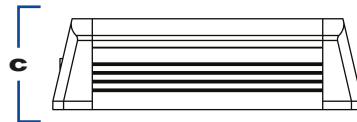
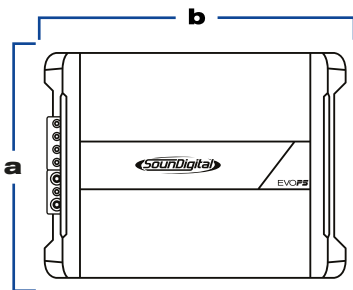
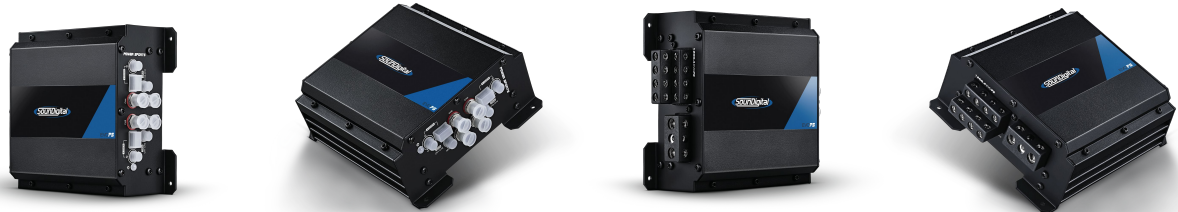
SPECIFICATIONS



INPUT



OUTPUT



- A:** 5.8 IN / 14.9 CM
- B:** 6.5 IN / 16.6 CM
- C:** 2.4 IN / 6.2 CM

2Ω

POWER @ 4Ω: 4 X 130 WRMS
 POWER @ 2Ω: 4 X 198 WRMS
 POWER @ 1Ω: 4 X 300 WRMS
 BRIDGE POWER @ 4Ω: 2 X 396 WRMS
 BRIDGE POWER @ 2Ω: 2 X 600 WRMS
 OPERATING VOLTAGE: 8V – 16V
 CURRENT DRAW (MUSIC): 49A
 CURRENT DRAW (MAX): 99A
 RECOMMENDED FUSE (MUSIC): 60A
 TOTAL EFFICIENCY: 84%
 DAMPING FACTOR: 200
 FREQUENCY RESPONSE (-3dB): 5Hz – 22kHz
 SNR: 88dB
 CROSSOVER HPF: 45Hz – 850Hz
 CROSSOVER LPF: 45Hz – 850Hz
 THD + N (10% RATED POWER): 0.1%

4Ω

POWER @ 4Ω: 4 X 198 WRMS
 POWER @ 2Ω: 4 X 300 WRMS
 POWER @ 1Ω: N/A
 BRIDGE POWER @ 4Ω: 2 X 600 WRMS
 BRIDGE POWER @ 2Ω: N/A
 OPERATING VOLTAGE: 8V – 16V
 CURRENT DRAW (MUSIC): 50A
 CURRENT DRAW (MAX): 101A
 RECOMMENDED FUSE (MUSIC): 60A
 TOTAL EFFICIENCY: 82%
 DAMPING FACTOR: 200
 FREQUENCY RESPONSE (-3dB): 5Hz – 22kHz
 SNR: 91dB
 CROSSOVER HPF: 45Hz – 850Hz
 CROSSOVER LPF: 45Hz – 850Hz
 THD + N (10% RATED POWER): 0.1%



2000.4



EVO PS

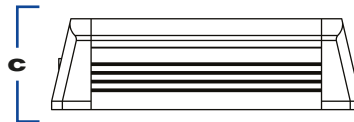
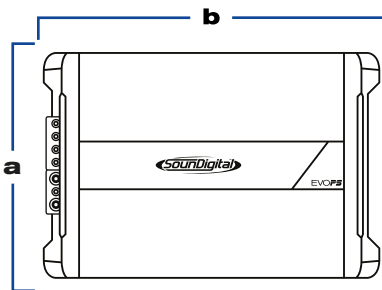
SPECIFICATIONS



INPUT



OUTPUT



- A:** 5.8 IN / 14.9 CM
- B:** 8.4 IN / 21.4 CM
- C:** 2.4 IN / 6.2 CM

2Ω

POWER @ 4Ω: 4 X 217 WRMS
 POWER @ 2Ω: 4 X 330 WRMS
 POWER @ 1Ω: 4 X 500 WRMS
 BRIDGE POWER @ 4Ω: 2 X 660 WRMS
 BRIDGE POWER @ 2Ω: 2 X 1000 WRMS
 OPERATING VOLTAGE : 8V – 16V
 CURRENT DRAW (MUSIC): 85A
 CURRENT DRAW (MAX): 171A
 RECOMMENDED FUSE (MUSIC): 100 A
 TOTAL EFFICIENCY: 81%
 DAMPING FACTOR: 200
 FREQUENCY RESPONSE (-3dB): 5Hz – 22kHz
 SNR: 90dB
 CROSSOVER HPF: 45Hz – 850Hz
 CROSSOVER LPF: 45Hz – 850Hz
 THD + N (10% RATED POWER): 0.1%

4Ω

POWER @ 4Ω: 4 X 330 WRMS
 POWER @ 2Ω: 4 X 500 WRMS
 POWER @ 1Ω: N/ A
 BRIDGE POWER @ 4Ω: 2 X 1000 WRMS
 BRIDGE POWER @ 2Ω: N/A
 OPERATING VOLTAGE : 8V – 16V
 CURRENT DRAW (MUSIC): 85A
 CURRENT DRAW (MAX): 171A
 RECOMMENDED FUSE (MUSIC): 100A
 TOTAL EFFICIENCY: 81%
 DAMPING FACTOR: 200
 FREQUENCY RESPONSE (-3dB): 5Hz – 22kHz
 SNR: 90dB
 CROSSOVER HPF: 45Hz – 850Hz
 CROSSOVER LPF: 45Hz – 850Hz
 THD + N (10% RATED POWER): 0.1%





Consumer
Technology
Association™



 WWW.SOUNDIGITALUSA.COM

 [SOUNDIGITALUSA](https://www.facebook.com/SOUNDIGITALUSA)

 [SOUNDIGITALUSA](https://www.instagram.com/SOUNDIGITALUSA)